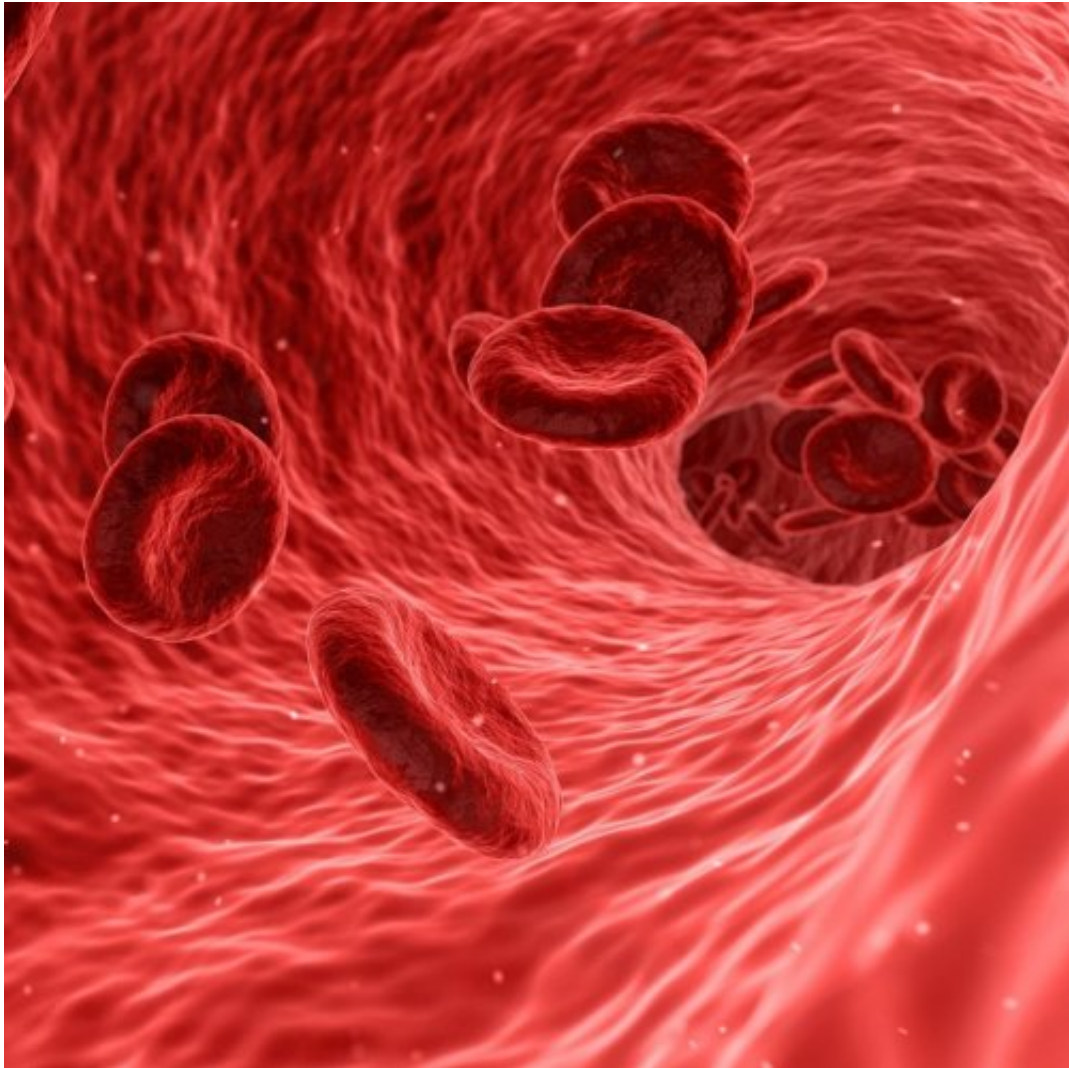


Blood Quiz: questions and answers



1. What is the smallest component of human blood?

- Plasma
- WBC
- RBC

2. More than 55% RBCs indicate a:

- Polycythemic
- Anemic
- Hemophiliac

3. What is the formation of WBC promoted by?

- Erythropoietin
- Thrombopoietin
- Colony stimulating factors

4. Blood flows in the human body because of :

- Difference in Pressure
- Difference in Temperature
- Difference in Volume

5. What fights foreign material in the blood?

- Agglutinin
- Antigens

Agglutinogens

6. Which blood group does not have antigens?

- B
- O
- AB

7. Where is blood is made?

- A heart
- A bone marrow
- Lungs

8. Hb is a type of what?

- Bone Marrow
- Vitamin
- Protein

9. What does sphygmomanometer measure?

- A blood pressure
- A blood cholestrol level
- A blood platelet count

10. What part of blood is responsible for clotting while injury?

- Platelets
- RBC
- WBC

Blood Quiz: questions and answers

Right answers

1. What is the smallest component of human blood?
WBC
2. More than 55% RBCs indicate a:
Polycythemic
3. What is the formation of WBC promoted by?
Colony stimulating factors
4. Blood flows in the human body because of :
Difference in Pressure
5. What fights foreign material in the blood?
Agglutinin
6. Which blood group does not have antigens?
O
7. Where is blood is made?
A bone marrow
8. Hb is a type of what?
Protein
9. What does sphygmomanometer measure?
A blood pressure
10. What part of blood is responsible for clotting while injury?
Platelets