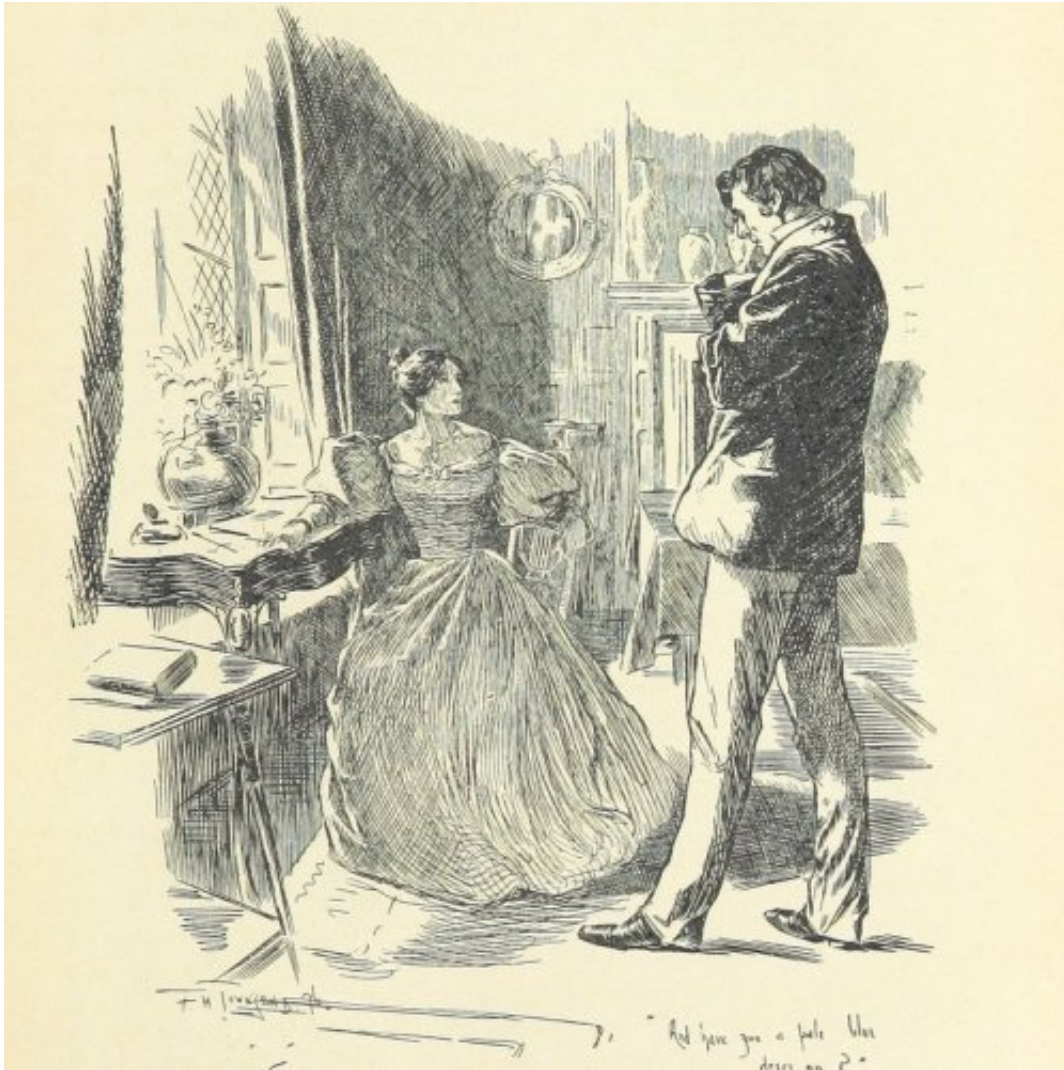


Jane Eyre (Charlotte Bronte) Quiz: questions and answers



1. What causes nearly half the students to die at Lowood School?

- Typhus
- Plague
- Food Poisoning

2. Who dies in Jane's arms?

- Miss Temple
- Helen Burns
- Georgiana

3. On Jane's wedding day, who does she find out her fiance is already married to?

- Blanche Ingram
- Grace Poole
- Bertha Mason

4. Where does Jane run away after her shocking failed wedding?

- Thornfield
- Whitcross
- Gateshead

5. How much does Jane inherit in John Eyre's will?

- 10 000 pounds
- 20 000 pounds

5000 pounds

6. How old is Jane at the beginning of the novel?

- 9
- 8
- 10

7. Who is not one of Jane's cousins?

- Mary
- Diana
- Celine

8. Where does Jane reunite with Rochester?

- Ferndean
- Whitcross
- Gateshead

9. What happened to the Thornfield house?

- It was sold at auction
- Fire
- Natural disaster damage

10. Who ran Lowood School?

- Mrs. Fairfax
- Mr. Brocklehurst
- Mr. Lloyd

Jane Eyre (Charlotte Bronte) Quiz: questions and answers

Right answers

1. What causes nearly half the students to die at Lowood School?
Typhus
2. Who dies in Jane's arms?
Helen Burns
3. On Jane's wedding day, who does she find out her fiance is already married to?
Bertha Mason
4. Where does Jane run away after her shocking failed wedding?
Whitcross
5. How much does Jane inherit in John Eyre's will?
20 000 pounds
6. How old is Jane at the beginning of the novel?
10
7. Who is not one of Jane's cousins?
Celine
8. Where does Jane reunite with Rochester?
Ferndean
9. What happened to the Thornfield house?
Fire
10. Who ran Lowood School?
Mr. Brocklehurst