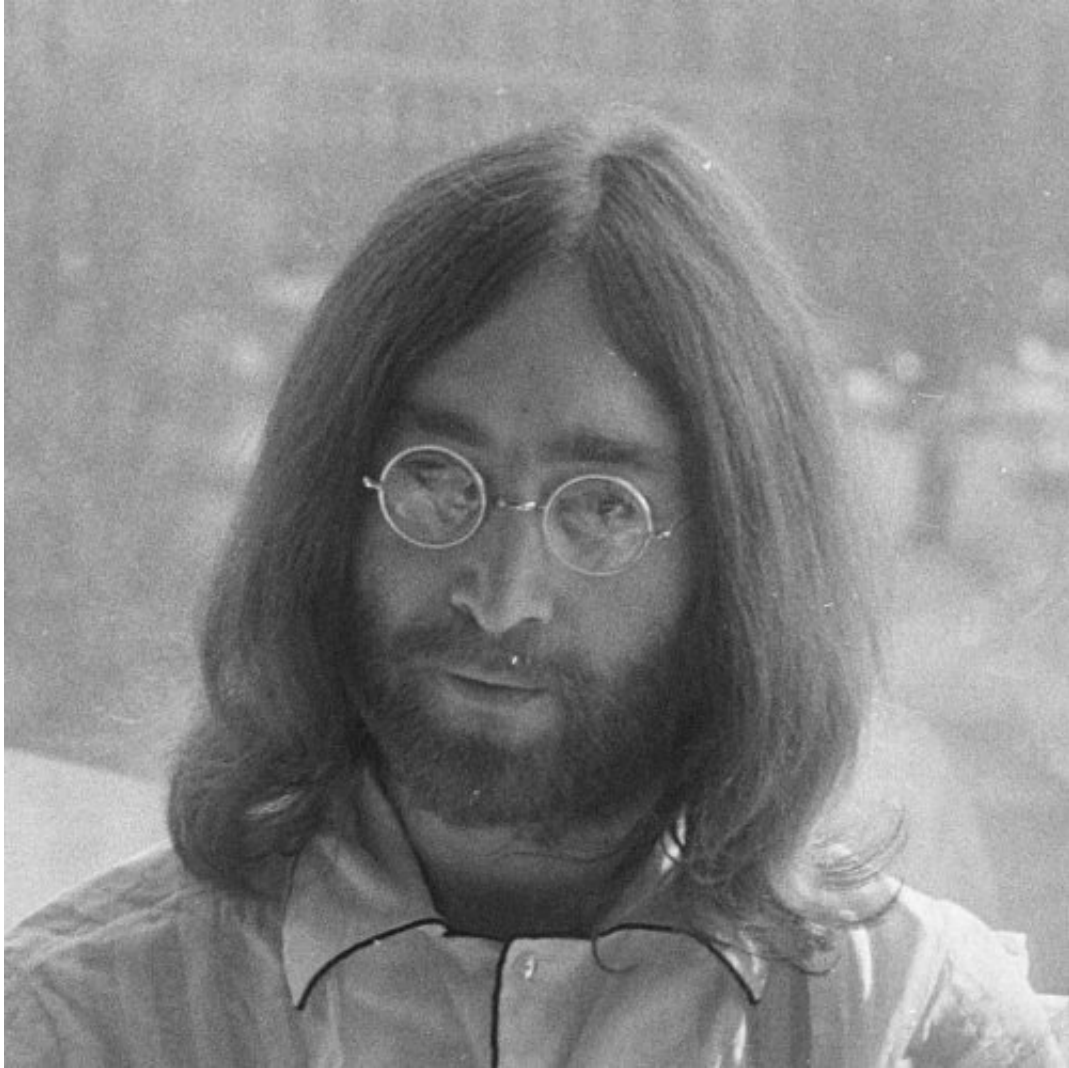


John Lennon Quiz: questions and answers



1. What was the first band that John Lennon joined?

- The Quarrymen
- The Beatles
- The Wings

2. When was John Lennon born?

- October 9, 1940
- December 12, 1943
- April 1, 1945

3. Where was he born?

- Manchester, England
- Liverpool, England
- London, England

4. At what age did John form The Quarrymen?

- 14
- 15
- 17

5. Who was John's first wife?

- Sophia Powell
- Cynthia Powell

Olivia Smith

6. When did John Lennon marry Yoko Ono?

1967

1966

1969

7. How many children did John Lennon have?

0

1

2

8. What was John's mother's name?

Olivia Smith

Cynthia Powell

Julia Stanley

9. How many films did John star in?

9

7

8

10. When was The Beatles formed?

1957

1959

1960

John Lennon Quiz: questions and answers

Right answers

1. What was the first band that John Lennon joined?

The Quarrymen

2. When was John Lennon born?

October 9, 1940

3. Where was he born?

Liverpool, England

4. At what age did John form The Quarrymen?

15

5. Who was John's first wife?

Cynthia Powell

6. When did John Lennon marry Yoko Ono?

1969

7. How many children did John Lennon have?

2

8. What was John's mother's name?

Julia Stanley

9. How many films did John star in?

9

10. When was The Beatles formed?

1960