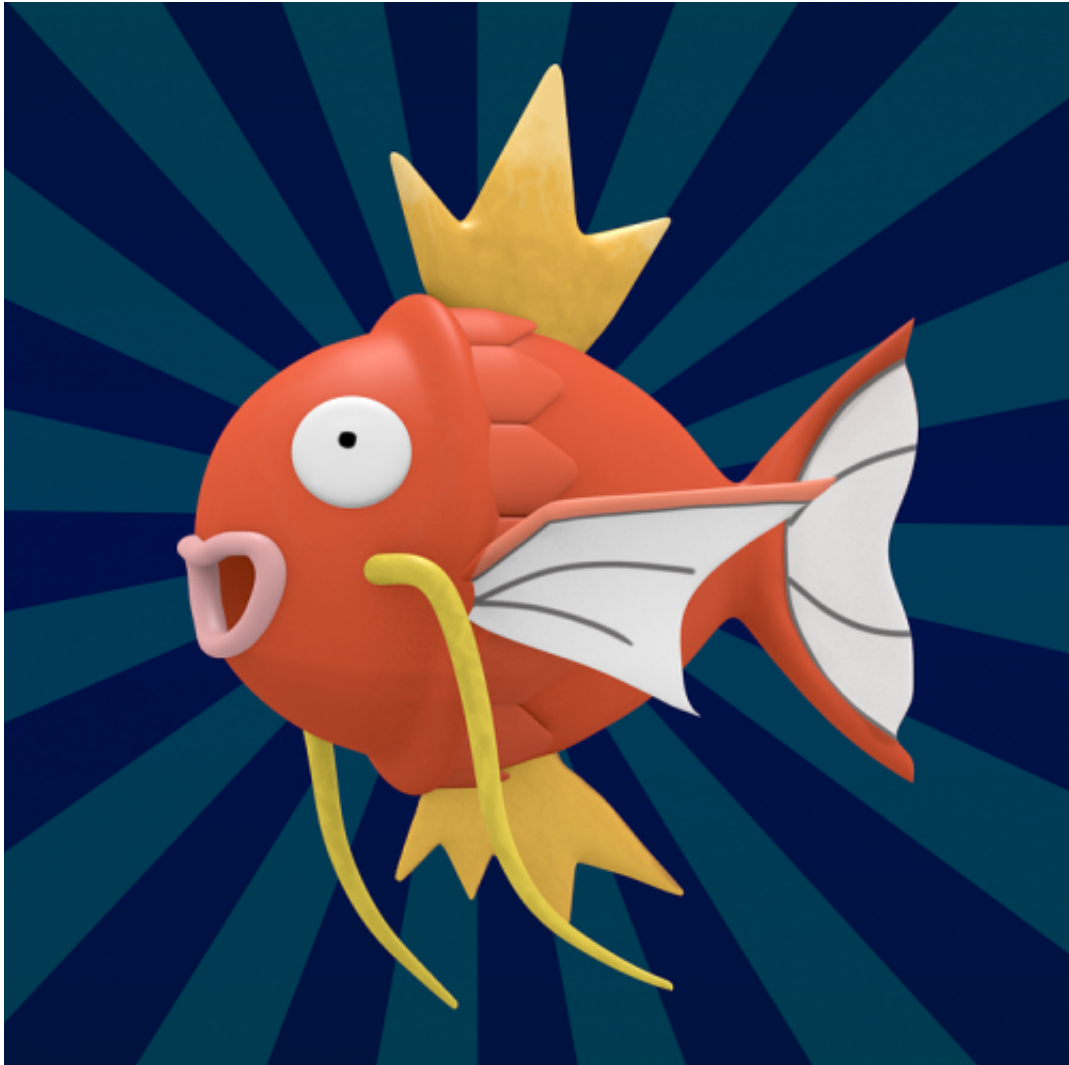


Pokemon Quiz: questions and answers



1. Pokemon is a franchise owned by 3 companies, but only 1 is the sole owner of the trademark, which company is that?

- Nintendo
- Creature
- Game Freak

2. What is the cheek color of Raichu?

- Red
- Yellow
- Blue

3. Which Pokemon can control time?

- Raichu
- Voltorb
- Dialga

4. Which of the following is the rock type Pokemon?

- Budew
- Rocky
- Bonsly

5. How many total types of Pokemon are there?

- 32
- 64

18

6. Which species of Pokemon Weedle belongs to?

- Raquaza Pokemon
- Mewtwo Pokemon
- The Hairy Bug Pokemon

7. How many flying type moves are there in Pokemon?

- 19
- 15
- 24

8. Which Pokemon Snorlax evolved from?

- Munchlax
- Charmander
- Pachirisu

9. Who is Turtwig?

- Toad
- A turtle
- Turtle

10. Pikachu vs Staryu, who wins this battle?

- Pikachu
- Staryu
- Turtwig

Pokemon Quiz: questions and answers

Right answers

1. Pokemon is a franchise owned by 3 companies, but only 1 is the sole owner of the trademark, which company is that?
Nintendo
2. What is the cheek color of Raichu?
Yellow
3. Which Pokemon can control time?
Dialga
4. Which of the following is the rock type Pokemon?
Bonsly
5. How many total types of Pokemon are there?
18
6. Which species of Pokemon Weedle belongs to?
The Hairy Bug Pokemon
7. How many flying type moves are there in Pokemon?
24
8. Which Pokemon Snorlax evolved from?
Munchlax
9. Who is Turtwig?
Turtle
10. Pikachu vs Staryu, who wins this battle?
Pikachu