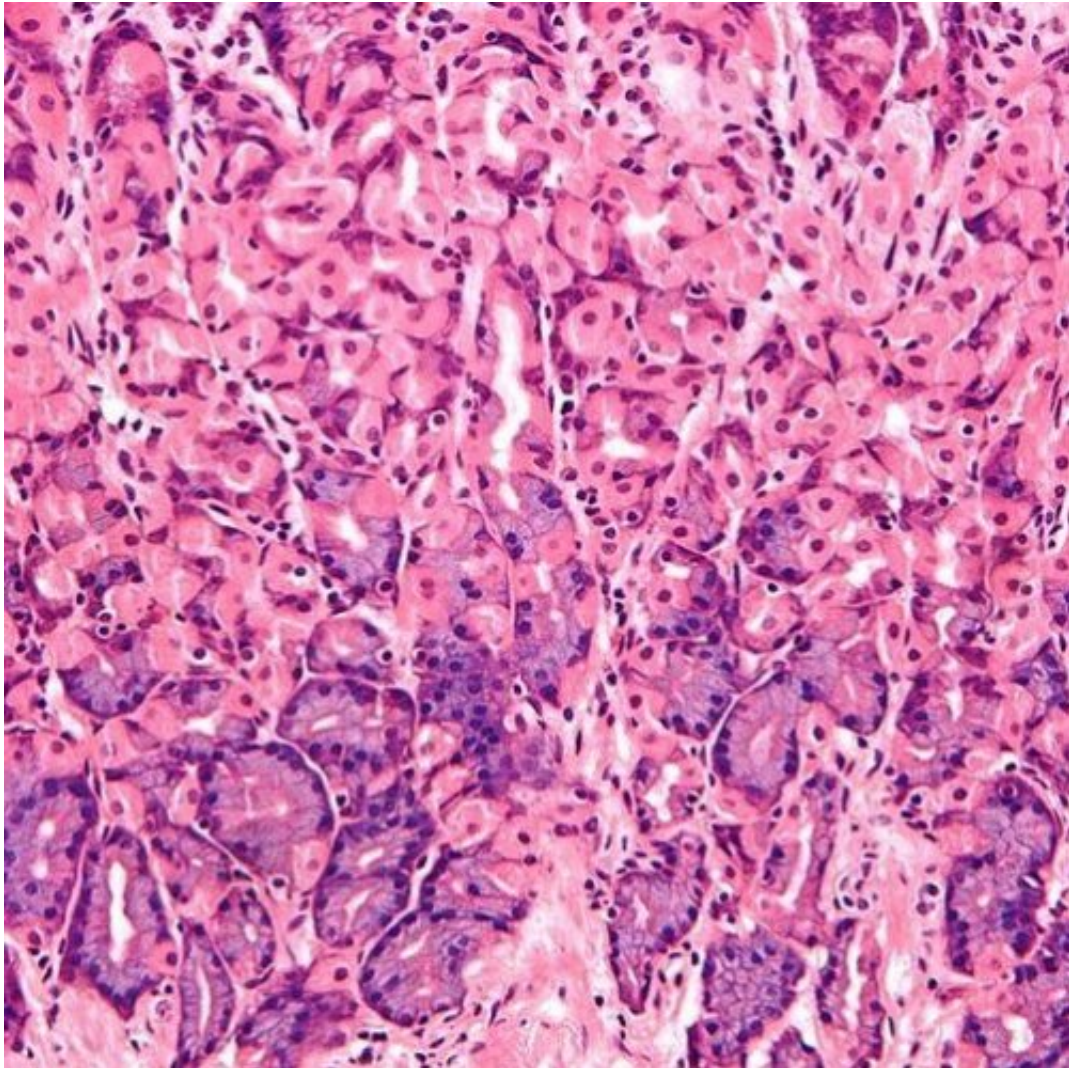


## Tissue Quiz: questions and answers



1. What is tissue?

- A type of blood cells
- A cellular organizational level between cells and a complete organ
- A part of central nervous system

2. How many basic animal tissues exist?

- 2
- 4
- 5

3. Which tissue has a protective function?

- Nervous
- Connective
- Epithelial

4. What do vascular tissues do?

- They protect a plant from damages
- They help to absorb more sunlight
- They provide a transportation of nutrients

5. Which type of plant cells is responsible for growth?

- Meristematic cells
- Nervous cells

Aerenchyma cells

6. What is the study of animal and human tissues called?

- Histology
- Cynology
- Allergology

7. How many types are plant tissues divided into?

- 3
- 5
- 9

8. When was the biological term "tissue" introduced?

- 1801
- 1869
- 1905

9. Which type of tissues does the inner lining of the digestive tract have?

- Muscular tissues
- Connective tissues
- Epithelial tissues

## Tissue Quiz: questions and answers

### Right answers

1. What is tissue?

A cellular organizational level between cells and a complete organ

2. How many basic animal tissues exist?

4

3. Which tissue has a protective function?

Epithelial

4. What do vascular tissues do?

They provide a transportation of nutrients

5. Which type of plant cells is responsible for growth?

Meristematic cells

6. What is the study of animal and human tissues called?

Histology

7. How many types are plant tissues divided into?

3

8. When was the biological term "tissue" introduced?

1801

9. Which type of tissues does the inner lining of the digestive tract have?

Epithelial tissues