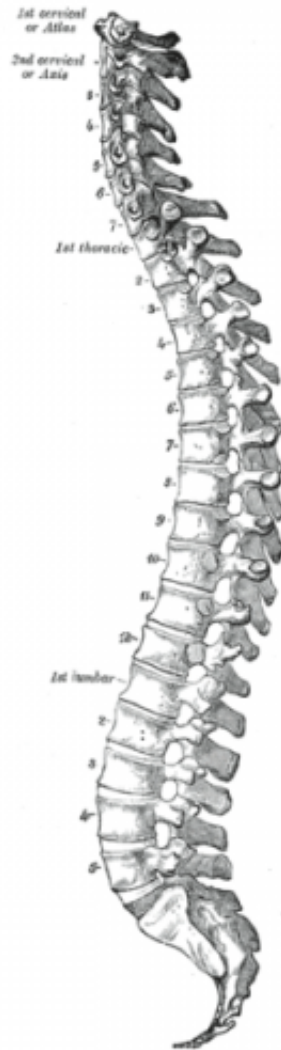


Vertebral Column Quiz: questions and answers



1. What is the vertebral column commonly known as?

- A backbone
- A spinal cord
- A spinal canal

2. How many bones are there in the human skeleton?

- 70
- 80
- 85

3. How many species of animals have a vertebral column?

- About 70,000
- About 50,000
- About 60,000

4. How many vertebral columns are in human vertebrae?

- 33
- 35
- 34

5. The human vertebral column is divided into:

- 4 regions
- 6 regions

5 regions

6. How many parts is typical vertebra consists of?

2

4

3

7. Cervical spine have ____

6 vertebrae

5 vertebrae

7 vertebrae

8. Thoracic spine have ____

13 vertebrae

14 vertebrae

12 vertebrae

9. Lumbar spine have ____

4 vertebrae

6 vertebrae

5 vertebrae

10. Sacrum have ____

3 (fused) vertebrae

4 (fused) vertebrae

5 (fused) vertebrae

Vertebral Column Quiz: questions and answers

Right answers

1. What is the vertebral column commonly known as?
A backbone
2. How many bones are there in the human skeleton?
80
3. How many species of animals have a vertebral column?
About 50,000
4. How many vertebral columns are in human vertebrae?
33
5. The human vertebral column is divided into:
5 regions
6. How many parts is typical vertebra consists of?
2
7. Cervical spine have ____
7 vertebrae
8. Thoracic spine have ____
12 vertebrae
9. Lumbar spine have ____
5 vertebrae
10. Sacrum have ____
5 (fused) vertebrae